



Speed Queen
M-H Laundry
Example

Distributor:
Alliance Laundry Systems LLC
 119, Shepard Street
 Ripon, WI 54971
 PH: 920-748-3121
 Fax: 920-748-4456

Project No. _____
 C13-----
 Drawn By: ESZ
 Dwg. No. C-----
 Date 11-Mar-13

This drawing is not intended for construction purposes. Equipment specifications are subject to change without notice.
 Alliance Laundry Systems LLC shall not be responsible for any changes made to any of its layouts and/or installation specifications without its prior written approval.

Sheet 1 of 1

EQUIPMENT LIST					
ITEM	MANUFACTURER	MODEL	DESCRIPTION	QTY	FIGURE
1	SPEED QUEEN	SFNNCFSP	FRONTLOAD WASHER	16	
2	SPEED QUEEN	SSGNCFGW	STACK DRYER	8	

DRAIN REQUIREMENTS

MODEL	REQUIRED MIN. DRAIN LINE FROM MACHINE	REQUIRED MIN. DRAIN LINE FOR EACH BULKHEAD.
SFNNCFSP	1 1/2"	4"

ALL MACHINES MUST BE GROUNDED. PROVIDE GROUND SOURCE IN ACCORDANCE WITH CODES.
 CONSULT ELECTRICAL CODE FOR LOCAL REQUIREMENTS. USE ONLY 3 POLE CIRCUIT BREAKERS FOR 3Ø SERVICE. MANUFACTURERS RECOMMEND PROVIDING 1 CIRCUIT BREAKER FOR EACH MACHINE.

FOR SAFETY PURPOSES, CLEARLY MARKED & EASILY ACCESSIBLE POWER CUTOFF SWITCHES CAN BE PROVIDED FOR EACH MACHINE.

GAS REQUIREMENTS

MODEL	OPERATING PRESSURE (Wpd)	GAS TYPE	MAX INPUT BTU/HOUR	CONNECTION SIZE	RECOMMENDED SUPPLY LINE
SSGNCFGW	6.5"±1.5"	NATURAL	50000	1/2"	1 1/4"
TOTAL			400000		

PROVIDE 1" LOOP TO EQUALIZE GAS PRESSURE. GAS CONNECTION TO BE PERFORMED BY QUALIFIED TECHNICIAN IN ACCORDANCE WITH LOCAL CODES.

EXHAUST/VENT REQUIREMENTS

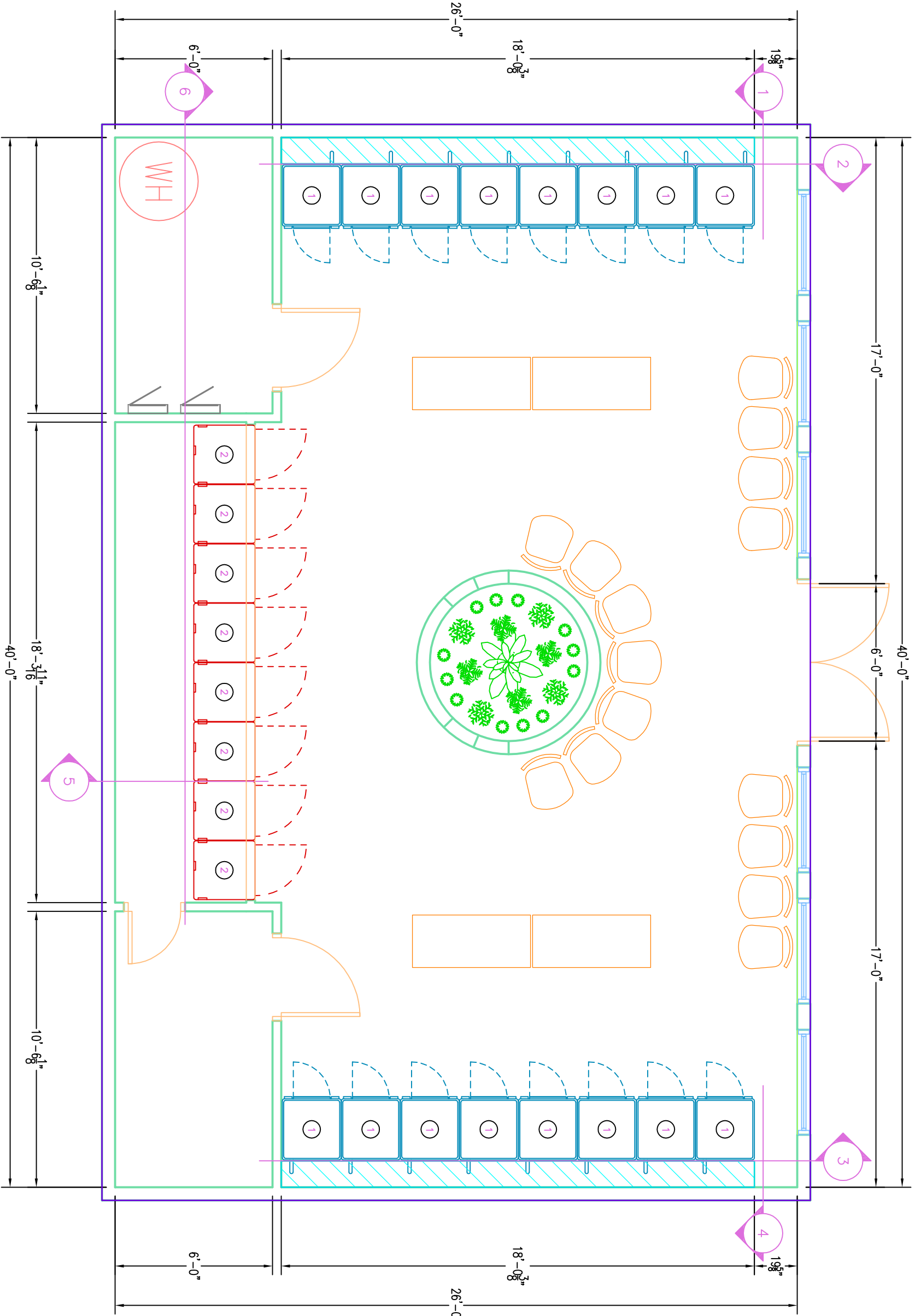
MODEL	SIZE	AIR FLOW	MIN. GROSS SECT. AREA ALL MACHINES
SSGNCFGW	4"	2x220 cfm	8x16 sq in

PROVIDE AT LEAST 4.4 SQ FT OPEN AREA FOR ALL DRYER MAKE-UP AIR SUPPLY. THIS FIGURE DOES NOT INCLUDE MAKE-UP AIR PROVISIONS FOR FINISHERS IF APPLICABLE.

WATER REQUIREMENTS

MODEL	COLD WATER		HOT WATER		AVERAGE HOT WATER USAGE IN GALLONS/CYCLE	MAXIMUM VALVE FLOW GALLONS/MINUTE		RECOMMENDED LINE SIZE TO SUPPLY MACHINE		RECOMMENDED LINE SIZE TO SUPPLY ALL MACHINES	
	CONNECTION SIZE	PRESSURE MIN. MAX.	CONNECTION SIZE	PRESSURE MIN. MAX.		COLD HOT	COLD HOT	COLD HOT	COLD HOT		
SFNNCFSP	3/4NH	20lbs 120lbs	3/4NH	20lbs 120lbs	1.59	7	7	1/2"	1/2"	1 1/2"	1 1/2"

HOT WATER USAGE FIGURES ARE ESTIMATES. ACTUAL CONSUMPTION WILL VARY DEPENDING ON LOCAL CONDITIONS, NUMBER OF CYCLES AND CYCLE TIMES SELECTED, LOAD SIZES AND MATERIALS PROCESSED.



For safety purposes, readily accessible emergency stop switch(es) can be provided to remove power to all frontload washers.

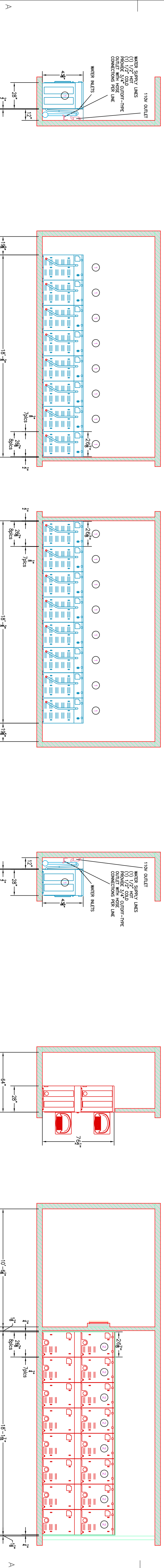
NOTE: All non-Alliance equipment is shown for general placement only. For actual installation requirements please refer to the actual manufacturers installation manual.

NOTE: Electrical sub-panels may be installed in the bulkheads behind the washers. Please contact the project distributor for further information.

Suggested dryer venting arrangement. Consult dryer technical manuals for detailed information. Provide at least 8.0 sq ft unrestricted open area for dryer make-up air supply.

NOTE: All dryer exhaust venting is to be supplied by the General Contractor.
 NOTE: Make-up air opening is to be sized per the manufacturers installation manual. The actual make-up air vent is to be supplied by the General Contractor.

0 2' 4' 8'
 SCALE: 1/4" = 1'-0"



1 Washer Bank 1
 SFNNCFSP Side View

2 Washer Bank 1
 SFNNCFSP Back Views

3 Washer Bank 2
 SFNNCFSP Back Views

4 Washer Bank 2
 SFNNCFSP Side View

5 Dryer Bank 1
 SSGNCFGW Side View

6 Dryer Bank 1
 SSGNCFGW Back Views