

SPEED QUEEN | PROFESSIONAL

Industrial Tumble Dryer



SDR190

9 kg

Dryers features

- Standard stainless steel drum with large diameter
- Easy-to-use microprocessor (ECT)
- Combination of radial and axial airflow
 - maximal heat transfer
 - low energy consumption
 - short drying time
- Large door opening for easy loading and unloading

Dryers options

- Reverse drum
- Full control programmer
- Residual moisture control
 - safe drying of delicate linen
 - humidity detection in %
 - Ideal for dry cleaners, fire departments
 - available on Easy and Flex Control
- Stainless steel front



Fast
cycles



Large Door
Opening



Easy
Operation



Low Energy
Consumption

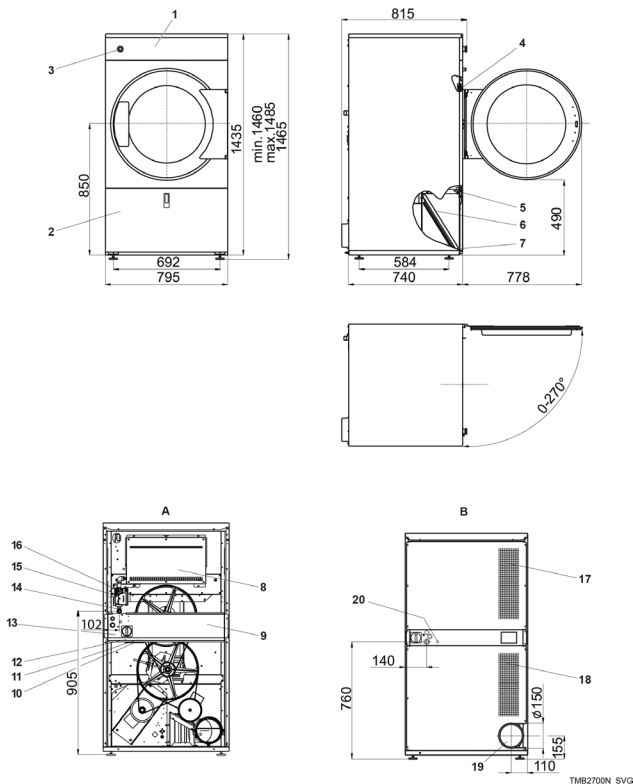


Standard
Stainless
Steel Drum

Dryer

Specifications

| | | Dryer |
|---------------------------------------|-------------------|---|
| CAPACITY | kg | 9 |
| DIAMETER | mm | Ø760 |
| VOLUME | l | 190 |
| AIRFLOW | m ³ /h | 350 |
| DRYING AVERAGE | l/min | 0,150 |
| GAS CONNECTION | IN | 3/4" |
| ELECTRICAL CONNECTION - GAS HEATING | | 1x 208-240V 50Hz 3x 208-240V 50Hz 3x 380-415V 50Hz 3x 380-415V +N 50Hz 3x 440V 60Hz 3x 480V 50Hz 3x 480V 60Hz |
| GAS HEATING OUTPUT | kW | 12,5 |
| ENERGY | kBTU/H | 42,7 |
| ELECTRICAL CONNECTION - ELECTRIC HEAT | | 3x 208-240V 50Hz 3x 380-415V 50Hz 3x 440V 60Hz 3x 480V 50Hz 3x 480V 60Hz |
| ELECTRICAL HEATING | kW | 9/12 |
| FAN | kW | 0,37 |
| DRIVE | kW | 0,18 |
| EXHAUST | mm | Ø150 |
| EASY CONTROL | | standard |
| FLEX CONTROL | | available |
| H×W×D | mm | 1465 x 795 x 815 |
| NET WEIGHT | kg | 170 |
| PACKED H×W×D | mm | 1570 x 880 x 885 |
| GROSS WEIGHT | kg | 180 |



1. Programmer
2. Emergency stop button (not applicable for version with coin meter)
3. Lint screen cover
4. Door lock microswitch
5. Lint cover microswitch
6. Lint screen
7. Name plate
8. Main switch
9. Main power supply
10. Heating chamber
11. Gas valve (G models only)
12. Pressure regulator (G models only)
13. Gas supply (G models only)
14. Airflow switch
15. Suction
16. Exhaust piping
17. Coin meter (version with coin meter)
18. Coin box (version with coin meter)